

KIND[®]

**MORE THAN 20 YEARS
OF EXPERIENCE**

KIND COMPREHENSIVE PRODUCT CATALOG

POCKETABLE STUDIO

PORTABLE BROADCAST VEHICLE

HARDWARE SWITCHER
SOFTWARE SWITCHER
3D VIRTUAL
ORBIT ROBOT CAMERA
PTZ CAMERA
BROADCAST PTZ
BROADCAST CONSOLE
FOLLOW FOCUS

Beijing KIND Network Technology Co.,Ltd.
KINDLIVECAST.COM

Hardware switcher

[Link to the official website](#)

1. Broadcast level hardware high-definition switcher;
2. Built-in digital mixer, analog mixer and audio hardware delayer;
3. Micro SD/TF Card storage, recording TS-MPEG2;
4. RTMP push live broadcast;
5. Intercom and TALLY
6. High-definition 10-screen split display;
7. Camera PTZ control, preset position control, white balance adjustment, aperture adjustment, etc.;
8. SDI input interface with camera power supply and power supply protection, realizes a 75Ω coaxial cable to transmit 3G-SDI video, audio, PTZ control, TALLY and power supply;
9. Application: studio, live, educational recording, and live streaming of media, conferences, and events;
10. Size: 440mm×245mm×85mm; Weight: about 4.5kg.



KD-BC-8L

[Link to the official website](#)



KD-BC-8H

1. Broadcast level hardware high-definition switcher;
2. Built-in digital mixer, analog mixer and audio hardware delay device;
3. USB/TF Card storage, recording MP4;
4. RTMP push live broadcast;
5. Intercom and TALLY;
6. HD input screen 4, HD output screen 2 display PVW/PGM;
7. Camera PTZ control, preset position control, white balance adjustment, aperture adjustment, etc.
8. Built-in wireless control module, supports wireless control of PTZ cameras and Tally;
9. Application: studio, live, educational recording, and live streaming of media, conferences, and events;
10. Size: 440mm×360mm×150mm; Weight: about 8kg.

[Link to the official website](#)

1. Broadcast level hardware mixing switcher, RGB4:4:4, YCbCr4:4:4;
2. Built-in digital mixer, analog mixer, audio hardware delayer and audio-visual synchronizer;
3. Micro SD/TF Card storage, recording TS-MPEG;
4. RTMP push live broadcast;
5. Intercom and TALLY;
6. 17.3-inch high-definition display;
7. Camera PTZ control, preset position control, white balance adjustment, aperture adjustment, etc.;
8. HDBaseT realizes one cable to transmit video, audio, PTZ control, TALLY and power supply;
9. Application: studio, live, educational recording, and live streaming of media, conferences, and events;
10. Size: 425mm×340mm×120mm; Weight: about 5kg.



KD-BC-8HN



Hardware switcher

KD-BC-8H Technical parameter

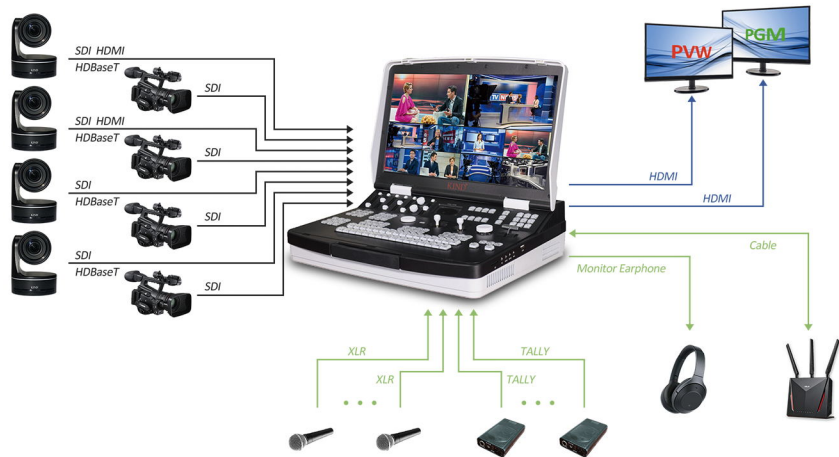


Model	KD-BC-8H
Power Supply	AC110V~240V, 50~60Hz, 80W
Temperature	0~40°C
Size	440mm×360mm×150mm
Weight	8kg
Signal	1080p50, 1080i50
Video input	HDMI×2, SDI×8
Video output	PGM output HDMI×2, SDI×2; PVW output HDMI×1, SDI×1
Audio input	Stereo (L, R) IN RCA×5, MIC XLR×5
Audio output	Stereo (L, R) OUT RCA×1, Balanced XLR OUT×2, Monitor3.5×1, Playback monitor3.5×1, Director calls MIC3.5×2
Interface	RJ451000M×1, USB×2, TF×1, WIFI
Intercom	TALLY MINI XLR OUT×8
Video switching	Hardware switch signal×8(1920×1080)
Mixer	Digital mixer×5, Analog mixer×5, Audio hardware delay device×1
Recording	MP4
Live broadcast	RTMP



Hardware switcher

KD-BC-8HN Technical parameter



Model	KD-BC-8HN
Power Supply	Input: AC110V~240V, 50~60Hz, 5A; Output: 12V 10A
Temperature	0~40°C
Size	425mm×340mm×120mm
Weight	5kg
Signal	2160p30,1080p60,1080p50
Video input	SDI×8, HDBaseT×4, HDMI×4
Video output	PGM output HDMI×1, SDI×1; PVW output HDMI×1, SDI×1; Systems display HDMI×1
Audio input	Stereo (L, R) IN RCA×5, MIC XLR×5
Audio output	Stereo (L, R) OUT RCA×1, Balanced XLR OUT×2, Monitor3.5×1, Playback monitor3.5×1, Director calls MIC3.5×2
Interface	USB2.0×2, RJ451000M×1
Intercom	TALLY MINI XLR OUT×8
Video switching	Hardware switch signal×8
Mixer	Digital mixer×5, Analog mixer×5, Audio hardware delay device×2
Recording	MP4
Live broadcast	RTMP



Hardware switcher

[Link to the official website](#)

1. Broadcast level 4K hardware high-definition switcher;
2. Built-in digital mixer, analog mixer and audio hardware delayer;
3. Recording 4K MP4 + HD MP4 ;
4. RTMP push live broadcast;
5. Intercom and Tally;
6. High-definition 10-screen split display;
7. Camera PTZ control, preset position control, white balance adjustment, aperture adjustment, etc.;
8. The HDBaseT input interface is equipped with camera power supply, which realizes the transmission of 4K video, audio, PTZ control, TALLY and power supply through one network cable;
9. Application: studio, live, educational recording, and live streaming of media, conferences, and events;
10. Size: 440mm×245mm×85mm; Weight: about 4.5kg.



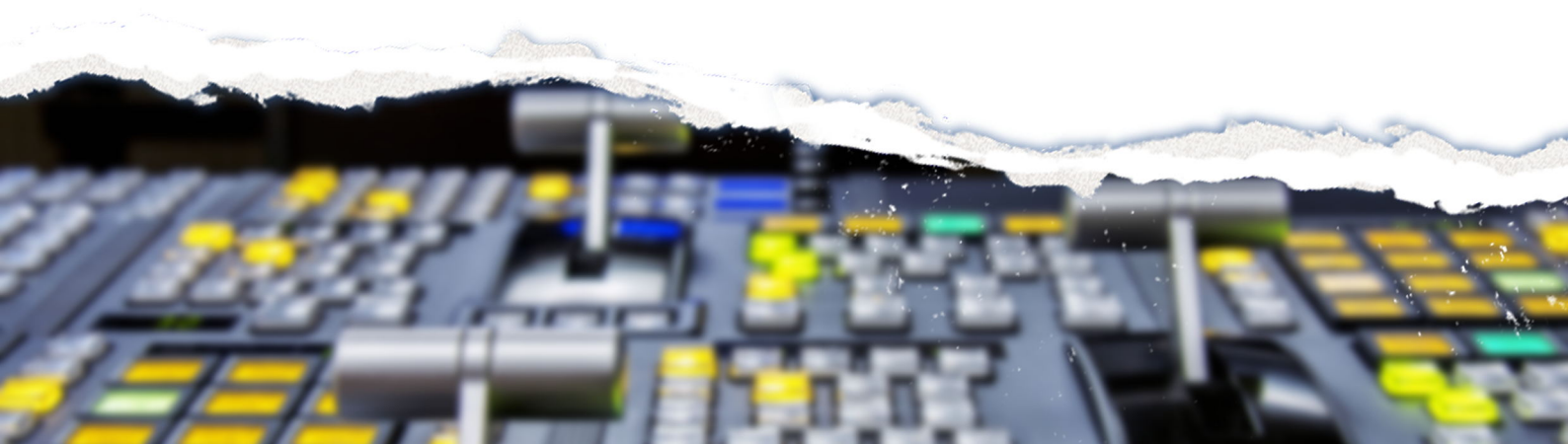
KD-BC-8UL

1. 12G SDI×4,HDMI2.0×6 inputs, expanded to SDI×8 input or HDMI×8 input;
2. 4K PGM (main output)×2 distribution outputs, PVW (multi-screen)×2 distribution outputs;
3. Input: 2160p 60/50/30/25/24, 1080p 60/59.94/50/30/29.97/25/24/23.98, 1080i 50/60/59.94, 720p 60/59.94/50/30/29.97/25/24/23.98, de-interlace;
4. Output: 2160p 60/50/30/25, 1080p 60/59.94/50/30/25/24, 1080i50/1080i60/59.94 (PGM); 2160P60/30, 1080P60 (PVW);
5. RGB/YUV color space, HDR, internal YUV422-10bit processing;
6. HDMI and SDI audio de-embedding, external audio inputs×4, audio outputs×2, each channel has independent volume adjustment, delay and multi-channel mixing output;
7. Special effects×36, dynamic text OSD and LOGO overlay, full-size background;
8. Chroma key (Chroma), brightness key (Luma) and mask (Mask);
9. Application: studio, live, educational recording, and live streaming of media, conferences, and events;
10. Size: 425mm×340mm×120mm; Weight: about 5kg.

[Link to the official website](#)

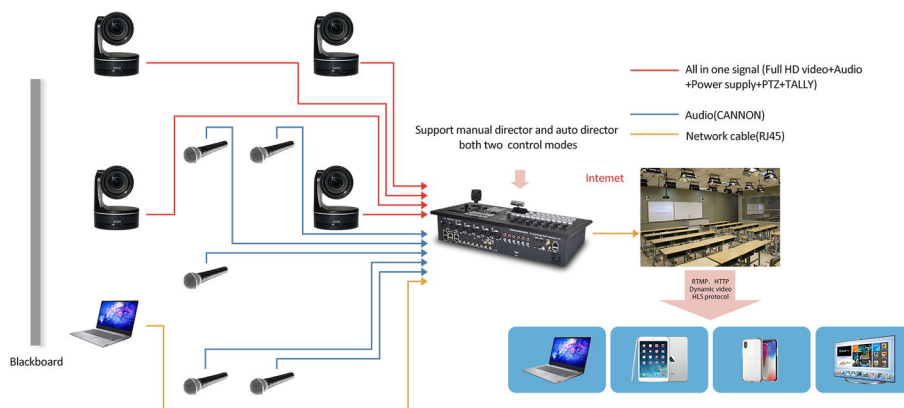


KD-BC-8UHN



Hardware switcher

KD-BC-8UL Technical parameter



Model	KD-BC-8UL
Power Supply	AC110V~240V, 50~60Hz, 80W
Temperature	0~40°C
Size	440mm×245mm×85mm
Weight	4.5kg
Signal	2160p30,1080p60,1080p50
Video input	SDI×8, HDBaseT×4, HDMI×2
Video output	HDMI×2, SDI×2
Audio input	Stereo (L, R) IN RCA×5, MIC XLR×5
Audio output	Stereo (L, R) OUT RCA×1, Balanced XLR OUT×2, Monitor3.5×1, Playback monitor3.5×1, Director calls MIC3.5×2
Interface	RJ451000M×1, USB×2, TF×1, WIFI
Intercom	TALLY MINI XLR OUT×8
Video switching	Hardware switch signal×8
Mixer	Digital mixer×5, Analog mixer×5, Audio hardware delay device×2
Recording	MP4
Live broadcast	RTMP

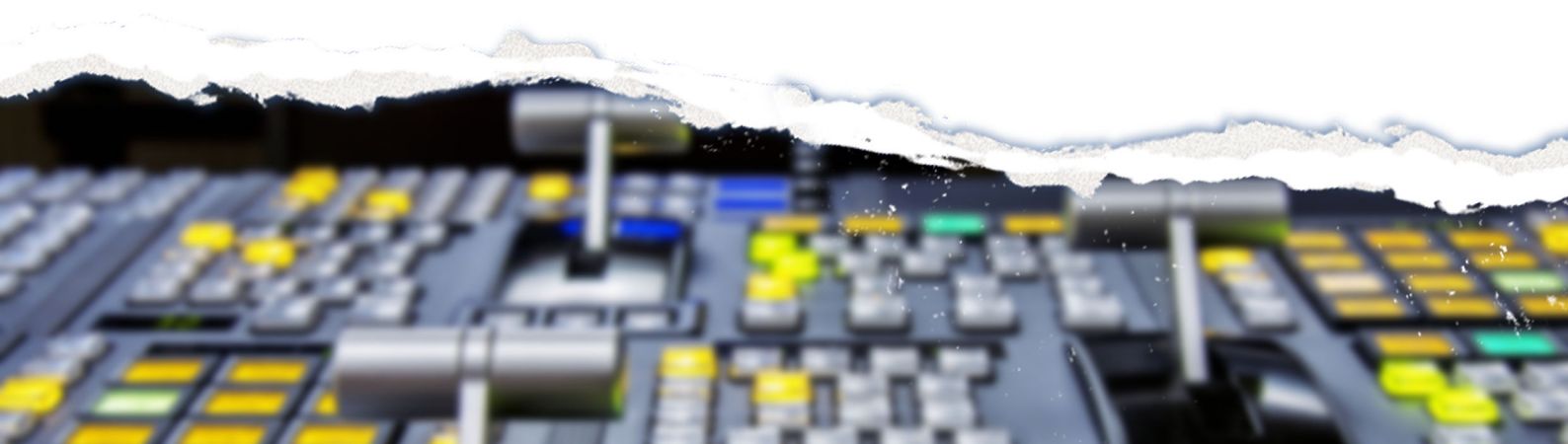


Hardware switcher

KD-BC-8UHN Technical parameter



Model	KD-BC-8UHN
Power Supply	Input: AC110V~240V, 50~60Hz, 5A; Output: 12V 10A
Temperature	0~40°C
Size	425mm×340mm×120mm
Weight	5kg
Signal input	2160p60/50/30/25/24, 1080p60/59.94/50/30/29.97/25/24/23.98, 1080i60/59.94/50, 720p60/59.94/50/30/29.97/25/24/23.98
Signal output	2160p60/50/30/25, 1080p60/59.94/50/30/25/24, 1080i50, 1080i60/59.94
Video input	12G-SDI×4, HDMI(2.0)×6
Video output	PGM output HDMI×1, PVW output HDMI×1, SDI×1
Audio input	Stereo (L, R) IN RCA×5, MIC XLR×5
Audio output	Stereo (L, R) OUT RCA×1, Balanced XLR OUT×2, Monitor 3.5×1, Playback monitor 3.5×1, Director calls MIC 3.5×2
Interface	USB2.0×2, RJ45 1000M×1
Intercom	TALLY MINI XLR OUT×8
Video switching	Hardware switch signal×8
Mixer	Digital mixer×5, Analog mixer×5, Audio hardware delay device×2
Recording	MP4
Live broadcast	RTMP



Software switcher

[Link to the official website](#)

1. Video input (SDI, HDMI, DVI) + DDR (video, picture, PPT, video playback) + stream (push, pull) + NDI + SRT, mixed switching;
2. Digital mixer + analog mixer + audio hardware delay device + video and audio synchronization regulator;
3. Recording MP4, MKV, MOV, AVI;
4. Live broadcast HTTP, RTMP, NDI, SRT;
5. Camera PTZ control;
6. Intercom and TALLY;
7. 64-bit kernel, 4K coding, Alpha online packaging system, virtual system, audio and video editing system;
8. Automatic switching;
9. Application: studio, live, educational recording, and live streaming of media, conferences, and events;
10. Size: 425mm × 340mm × 120mm; Weight: about 5kg.

[Link to the official website](#)



1. 4K switcher, video input (SDI, HDMI) + DDR (video, picture, PPT, video playback) + stream (push, pull) + NDI + SRT, mixed switching;
2. Digital mixer + analog mixer + audio hardware delay device + audio and video synchronization regulator;
3. Recording 4K MP4, MKV, MOV, AVI;
4. Live broadcast HTTP, RTMP, NDI, SRT;
5. Camera PTZ control;
6. Intercom and TALLY;
7. 64-bit kernel, 4K coding, Alpha online packaging system, virtual system, audio and video editing system;
8. Automatic switching;
9. Application: studio, live, educational recording, and live streaming of media, conferences, and events;
10. Size: 425mm × 340mm × 120mm; Weight: about 5kg.

1. Hardware signal (SDI, HDMI, HDBaseT)+NDI+Stream+DDR, mixed switching;
2. Digital mixer + Analog mixer + Audio hardware delay device;
3. Recording MP4, MKV, MOV;
4. Live broadcast HTTP, RTMP, NDI, SRT;
5. Camera PTZ control;
6. Intercom and TALLY;
7. Captioning system, slow motion system, virtual system, audio and video editing system;
8. Automatic switching, fault pass-through, power-off pass-through;
9. Application: studio, live, educational recording, and live streaming of media, conferences, and events;
10. Size: 380mm × 410mm × 170mm; Weight: about 10kg.

[Link to the official website](#)



Software switcher

KD-LC-8N Technical parameter



Model	KD-LC-8N
Power Supply	Input: AC110V~240V, 50~60Hz, 5A; Output: 12V 25A
Temperature	0~40°C
Size	425mm×340mm×120mm
Weight	5kg
Video input	SDI×4, DVI×1, HDMI×1, NDI×6, SRT×6, Stream×6
Video output	PGM output HDMI×1; Systems display HDMI×1, NDI×1, SRT×6
Audio input	Stereo (L, R) IN RCA×5, MIC XLR×5
Audio output	Stereo (L, R) OUT RCA×1, Balanced XLR OUT×2, Monitor3.5×1, Playback monitor3.5×1, Director calls MIC3.5×2
Interface	USB2.0×2, USB3.0×2, USB3.1×2, RJ451000M×1
Intercom	TALLY MINI XLR OUT×8
Video switching	Signal×4, NDI×16, SRT×16, Stream×16,DDR×16
Mixer	Digital mixer×5, Analog mixer×5, Audio hardware delay device×2
Recording	MP4, MKV, MOV, DVI
Live broadcast	HTTP, RTMP, NDI, SRT
Delayed broadcast	Audio and video hardware delayed broadcasting system
Subtitle	CG-Alpha DVE, Video playback, Virtual matting system
Configuration	Intel i9 12900T, RAM 32G, 1TB SSD



Software switcher

KD-LC-16N Technical parameter

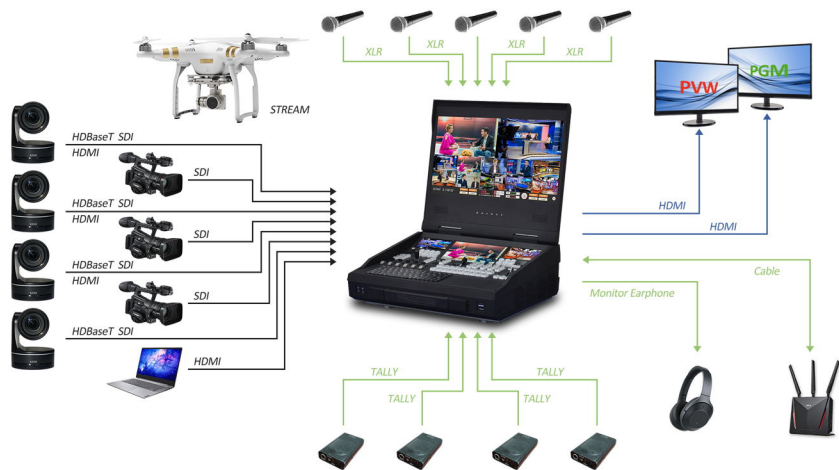


Model	KD-LC-16N
Power Supply	Input: AC110V~240V, 50~60Hz, 5A; Output: 12V 25A
Temperature	0~40°C
Size	425mm×340mm×120mm
Weight	5kg
Video input	SDI×4, HDMI(4K30p)×4, NDI×16, Stream×16, SRT×16,DDR×16
Video output	HDMI×1, SRT×1, NDI×1
Audio input	Stereo (L, R) IN RCA×5, MIC XLR×5
Audio output	Stereo (L, R) OUT RCA×1, Balanced XLR OUT×2, Monitor3.5×1, Playback monitor3.5×1, Director calls MIC3.5×2
Interface	USB2.0×2, USB3.0×2, USB3.1×2, RJ451000M×1
Intercom	TALLY MINI XLR OUT×8
Video switching	Signal×8,NDI×16,SRT×16,Stream×16,DDR×16
Mixer	Digital mixer×5, Analog mixer×5, Audio hardware delay device×2
Recording	4K MP4, MKV, MOV, DVI
Live broadcast	HTTP, RTMP, NDI, SRT
Delayed broadcast	Audio and video hardware delayed broadcasting system
Subtitle	CG-Alpha DVE, Video playback, Virtual matting system
Configuration	Intel i9 12900T, DDR5 32G, 1TB SSD



Software switcher

KD-LC-8M Technical parameter



Model	KD-LC-8M
Power Supply	AC110V~240V, 50~60Hz, 400W
Temperature	0~40°C
Size	380mm×410mm×170mm
Weight	10kg
Video input	SDI×4,HDMI(4K60P)×4,HDBaseT(4K30P)×4,NDI×10,SRT×10,Stream×10,DDR×10
Video output	HDMI×1, SRT×1, NDI×1
Audio input	Stereo (L, R) IN RCA×5, MIC XLR×5
Audio output	Stereo (L, R) OUT RCA×1, Balanced XLR OUT×2, Monitor3.5×1, Playback monitor3.5×1, Director calls MIC3.5×2
Interface	USB2.0×2, USB3.0×2, RJ451000M×1
Mixer	Digital mixer×5, Analog mixer×5, Audio hardware delay device×1
Recording	2160p60 MP4, MKV, MOV, DVI
Live broadcast	HTTP, RTMP, NDI, SRT
Control	PTZ control
Subtitle	CG-Alpha DVE, Video playback, Virtual matting system
Configuration	Intel i9 12900T, DDR5 32G, 1TB SSD



3D virtual

[Link to the official website](#)

1. Full interface portable 3D virtual devices, SDI×4, HDMI×4, VGA×2, DVI×2, NDI×4, SRT×4, Stream×4 input;
2. 4 channel virtual keying system;
3. 64 bit system, 4K programming kernel, Alpha online packaging;
4. Digital mixer + Analog mixer + Audio delay;
5. Virtual PTZ + Camera PTZ;
6. 16 channel switching + virtual interactive studio;
7. Virtual studio with tracking;
8. With all the functions of virtual studio;
9. Application: TV station, virtual studio, micro class, virtual classroom;
10. Size: 440mm×360mm×150mm; Weight: about 8kg.



KD-3DVC-6M

[Link to the official website](#)



KD-3DVC-6N

1. Portable 3D virtual all-in-one devices;
2. 4 channel virtual keying system;
3. SDI×4, NDI×8, SRT×8, Stream×8, HDMI×1 input;
4. Digital mixer + analog mixer + audio delay + audio and video synchronization regulator;
5. Virtual camera PTZ + camera PTZ;
6. 16 channel switching + virtual interactive studio;
7. Virtual studio with mobile tracking function;
8. Support flexible display ring screen background scene;
9. Application: TV station, virtual studio, micro class, virtual classroom;
10. Size: 425mm×340mm×120mm; Weight: about 5kg.

[Link to the official website](#)

1. Portable 4K 3D virtual all-in-one devices;
2. 4 channel virtual keying system;
3. HDMI2.0×4, NDI×8, SRT×8, Stream×8 input;
4. Digital mixer + analog mixer + audio delay + audio and video synchronization regulator;
5. Virtual camera PTZ + camera PTZ;
6. 10 channel switching + virtual interactive studio;
7. Virtual studio with mobile tracking;
8. 4K 60p recording, providing flexible display screen background;
9. Application: TV station, virtual studio, micro class, virtual classroom;
10. Size: 380mm×410mm×170mm; Weight: about 10kg.



KD-3DVC-8M



KD-3DVC-6M Technical parameter



Model	KD-3DVC-6M
Power Supply	AC110V~240V, 50~60Hz, 400W
Temperature	0~40°C
Size	440mm×360mm×150mm
Weight	8kg
Video input	VGA×2, DVI×2, HDMI×4, SDI×4(ring out×4), NDI×4, SRT×4, Stream×4
Video output	PGM output HDMI×2, SDI×1, NDI×8, SRT×8; PVW output HDMI×1; Systems display HDMI×1, DP×1
Audio input	Stereo (L, R) IN RCA×5, MIC XLR×5
Audio output	Stereo (L, R) OUT RCA×1, Balanced XLR OUT×2
Interface	USB2.0×2, USB3.0×2, RJ451000M×1
Video switching	Camera×4, NDI×8, SRT×8, Stream×8, DDR×8, Virtual camera×8
Mixer	Digital mixer SDI/HDMI×4, Analog mixer(XLR\RCA)×5, Audio hardware delay device
Recording	MP4, MKV, MOV, DVI
Live broadcast	RTMP
Virtual	4 channel virtual keying system
Subtitle	CG-Alpha DVE
Camera PTZ	Virtual PTZ, Camera PTZ
Track virtual	Virtual studio with mobile tracking
Studio	Interactive virtual studio
Configuration	Intel i9 12900T, RAM 32G, 1TB, 8G GPU



KD-3DVC-6N Technical parameter



Model	KD-3DVC-6N
Power Supply	Input: AC110V~240V, 50~60Hz, 5A; Ouput: 12V 25A
Temperature	0~40°C
Size	425mm×340mm×120mm
Weight	5kg
Video input	SDI×4, HDMI×1, NDI×8, SRT×8, Stream×8
Video output	HDMI×1,NDI×1,SRT×1
Audio input	Stereo (L, R) IN RCA×5, MIC XLR×5
Audio output	Stereo (L, R) OUT RCA×1,Balanced XLR OUT×2
Interface	USB2.0×2, USB3.0×2, RJ451000M×1
Video switching	Camera×4, NDI×8, SRT×8, Stream×8, DDR×8, Virtual camera×8
Mixer	Digital mixer SDI×4, Analog mixer(XLR\RCA)×5, Audio hardware delay device
Recording	MP4, MKV, MOV, DVI
Live broadcast	RTMP
Virtual	4 channel virtual keying system
Subtitle	CG-Alpha DVE
Camera PTZ	Virtual PTZ,Camera PTZ
Track virtual	Virtual studio with mobile tracking
Studio	Interactive virtual studio
Configuration	Intel i9 12900T, RAM 32G, 1TB, 8G GPU



KD-3DVC-8M

Technical parameter



Model	KD-3DVC-8M
Power Supply	AC110V~240V, 50~60Hz, 400W
Temperature	0~40°C
Size	380mm×410mm×170mm
Weight	10kg
Video input	HDMI×4,NDI×8,SRT×8,Stream×8
Video output	PGM output HDMI×1, NDI×1, SRT×1; Systems display HDMI×1
Audio input	Stereo (L, R) IN RCA×5, MIC XLR×5
Audio output	Stereo (L, R) OUT RCA×1,Balanced XLR OUT×2
Interface	USB2.0×2, USB3.0×2, RJ451000M×1
Video switching	Camera×4, NDI×8, SRT×8, Stream×8, DDR×8, Virtual camera×8
Mixer	Digital mixer SDI×4, Analog mixer(XLR\RCA)×5, Audio hardware delay device
Recording	2160p60 MP4, MKV, MOV, DVI
Live broadcast	RTMP
Virtual	4 channel virtual keying system
Subtitle	CG-Alpha DVE
Camera PTZ	Virtual PTZ,Camera PTZ
Track virtual	Virtual studio with mobile tracking
Studio	Interactive virtual studio
Configuration	Intel i9 12900T, RAM 32G, 1TB, 8G GPU



Orbit robot camera

1. Camera: 4K broadcast grade PTZ camera;
2. Lifting: Precision three-stage ball screw servo electric cylinder lifting system;
3. Height: initial $\leq 700\text{mm}$, stroke 800mm , repeat positioning accuracy $\pm 0.01\text{mm}$; speed: 250mm/s to 0.1mm/s , full servo stepless speed regulation;
4. Pulley cart: 4×1 silent track wheel, synchronous belt drive, full servo intelligent control movement, stepless speed regulation, repeat positioning accuracy $\pm 1\text{mm}$, speed: 100cm/s to 0.5cm/s ;
5. Track: Intelligent shooting and splicing track, three bends and three straight, 6 meters in total;
6. Motor: one for lifting and one for translation, $48\text{V}/200\text{W}$ servo motor and electric control system;
7. Broadcast consloe: precise intelligent shooting trajectory control system and control keyboard;
8. Transmission: wireless real-time image transmission system, wireless control system;
9. Battery: $14.4\text{V}/28.8\text{V}$ 290Wh V-port battery $\times 2$ (optional);
10. Installation: support mobile installation and fixed hoisting, and provide all installation parts.

[Link to the official website](#)



Orbit robot camera

[Link to the official website](#)

1. Camera: 4K60P full frame movie camera and full frame zoom lens 70mm-200mm;
2. Lifting: Precision three-stage ball screw servo electric cylinder lifting system;
3. Height: initial $\leq 700\text{mm}$, stroke 800mm, repeat positioning accuracy $\pm 0.01\text{mm}$; speed: 250mm/s to 0.1mm/s, full servo stepless speed regulation;
4. Pulley cart: 4 \times 1 silent track wheel, synchronous belt drive, full servo intelligent control movement, stepless speed regulation, repeat positioning accuracy $\pm 1\text{mm}$, speed: 100cm/s to 0.5cm/s;
5. Track: Intelligent shooting and splicing track, three bends and three straight, 6 meters in total;
6. Motor: one for lifting and one for translation, 48V/200W servo motor and electric control system;
7. Broadcast consloe: precise intelligent shooting trajectory control system and control keyboard;
8. PTZ: broadcast fully servo KD-A800PTZ;
9. Follow Focus: broadcast follow focus supports cascading KD-FF06/08;
10. Transmission: wireless control system;
11. Battery: 14.4V/28.8V 290Wh V-port battery $\times 2$ (optional);
12. Installation: support mobile installation and fixed hoisting, and provide all installation parts.



PTZ camera

1. 1/1.8-inch Exmor R CMOS;
2. The lens diameter 105mm;
3. Large wide angle, diagonal 92°, horizontal 85°;
4. Servo motor high-speed PTZ, pan/tilt speed 0.1°~300°/sec;
5. 12x optical zoom;
6. NDI HX wireless delay 150ms;
7. Recording MP4/MOV, 1080p 60fps Ultra TF (MicroSD) FAT32, exFAT;
8. Live broadcast NDI HX, 360°TALLY lamp, dual ϕ 9.7 microphone omni-directional array microphone;
9. Application: studio, educational recording, media live, multi-camera shooting;
10. Size: 160mm×155mm×230mm; Weight: about 2kg.

[Link to the official website](#)



KD-C18SRT

[Link to the official website](#)



KD-C18NW

1. 1/1.8-inch Exmor R CMOS;
2. Lens diameter 105mm;
3. Large wide angle, diagonal 92°, horizontal 85°;
4. Servo motor high-speed PTZ, pan/tilt speed 0.1°~300°/sec;
5. 12x optical zoom;
6. SRT Wireless delay 150ms;
7. Recording MP4/MOV, 1080p 60fps Ultra TF (MicroSD) FAT32, exFAT;
8. Live broadcast SRT, RTMP, 360°TALLY lamp, dual ϕ 9.7 microphone omni-directional array microphone;
9. Application: studio, educational recording, media live, multi-camera shooting;
10. Size: 160mm×155mm×230mm; Weight: about 2kg.

[Link to the official website](#)

1. 1/1.8-inch Exmor R CMOS;
2. Lens diameter 105mm;
3. Large wide angle, diagonal 92°, horizontal 85°;
4. Servo motor high-speed PTZ, pan/tilt speed 0.1°~300°/sec;
5. 12x optical zoom;
6. 3G-SDI 1080p video output;
7. 360° TALLY lamp;
8. Wireless control PTZ;
9. Application: studio, educational recording, media live, multi-camera shooting;
10. Size: 160mm×155mm×230mm; Weight: about 2kg;



KD-C18B



KD-C18

Technical parameter

Model	KD-C18B	KD-C18NW	KD-C18SRT
Imager	1/1.8 Type Exmor Rs Cmos		
Lens diameter	105mm		
Optical zoom	12X		
Angle	Pan-175°~+175°, Tilt+90°~-30°		
Speed	Servo Motor Control, Speed: Pan0.1°~300°/s, Tilt0.1°~300°/s		
Precision	Precision Repeatability Error < 0.01		
Slow mode	Support		
Effective pixels	2,400,000 Pixels		
Min illumination	0.01 Lux		
SNR	55db		
Resolution	1920x1080		
IRIS	Auto/Manual		
Focus	Auto/Manual		
White balance	Auto/Manual		
Focal length	F=4.2mm~50.4mm, F1.8 (wide)~F2.8 (tele)		
Min distance	1000mm~INF (wide),1500mm~INF (tele)		
Singal	1080p60, 1080i60, 1080p50, 1080i50, 1080p30, 1080p25, Max:2048x1080		
Preset bit	128		
Control protocol	Visca RS-485	VISCA RS-485, RJ45 (input /output), Support Control, NDI HX Wireless	VISCA RS-485, RJ45 (input /output), Support Control, SRT Wireless
Interface	BNC(×1), 1vp-p 75ω, SDI out×1	BNC(×1), 1.0Vp-p 75Ω, SDI out×1, NDI RJ45×1, NDI HX Wireless Wi-Fi×1, USB×1	BNC(×1), 1.0Vp-p 75Ω, SDI out×1, SRT RJ45×1, SRT Wireless Wi-Fi×1, USB×1
Video encod	N/A	H.264 Baseline/Main/High Profile, 4:2:0, Max: 8mbps	
Audio encod	N/A	AAC LC, 32kbps, 64kbps, 96kbps, 128 Kbps	
REC	N/A	MP4/MOV, 1920×1080 60fps	
Card	N/A	Ultra TF(MicroSD)/FAT32, exFAT	
Live stream	N/A	NDI	SRT, RTMP
TALLY	360°TALLY		
Power supply	DC jack 12DC, DC10.8V-13.2V		



PTZ camera

[Link to the official website](#)

1. 1/2.5-inch Exmor R CMOS, broadcast quality 4K image;
2. 4K 20x optical zoom, SRZ 4K 30x, HD 40x;
3. Servo motor high-speed PTZ, pan/tilt speed 0.1°~300°/sec;
4. NDI wired, NDI wireless;
5. 8.93 million pixels, 3840×2160 resolution;
6. SDI, NDI, HDMI 4K video output;
7. Recording MP4/MOV, 1080p 60fps Ultra TF (MicroSD) FAT32, exFAT;
8. Live broadcast NDI HX, 360° TALLY lamp, dual φ9.7 microphone omni-directional array microphone;
9. Application: 4K video, studio, media live, multi-camera shooting;
10. Size: 160mm×155mm×230mm; Weight: about 1.6kg.



KD-C25NW

[Link to the official website](#)



KD-C25SRT

1. 1/2.5-inch Exmor R CMOS, broadcast quality 4K image;
2. 4K 20x optical zoom, SRZ 4K 30x, HD 40x;
3. Servo motor high-speed PTZ, pan/tilt speed 0.1°~300°/sec;
4. SRT wired, SRT wireless;
5. 8.93 million pixels, 3840×2160 resolution;
6. SDI, SRT, HDMI 4K video output;
7. Recording MP4/MOV, 1080p 60fps Ultra TF (MicroSD) FAT32, exFAT;
8. Live broadcast SRT, RTMP, 360° TALLY lamp, dual φ9.7 microphone omni-directional array microphone;
9. Application: 4K video, studio, media live, multi-camera shooting;
10. Size: 160mm×155mm×230mm; Weight: about 1.6kg.

[Link to the official website](#)

1. 1/2.5-inch Exmor R CMOS, broadcast quality 4K image;
2. 4K 20x optical zoom, SRZ 4K 30x, HD 40x;
3. Servo motor high-speed PTZ, pan/tilt speed 0.1°~300°/sec;
4. 4K HDBaseT remote lossless image transmission and control technology;
5. 8.93 million pixels, 3840×2160 resolution;
6. SDI, HDMI 4K, HDBaseT 4K video output;
7. Audio XLR x 2 input, 48V phantom power supply, embedded audio;
8. Built-in dual φ9.7 microphone omni-directional array microphone and 360° TALLY lamp;
9. Application: 4K video, studio, media live, multi-camera shooting;
10. Size: 160mm×155mm×230mm; Weight: about 1.6kg.



KD-C25UH



KD-C25

Technical parameter

Model	KD-C25UH	KD-C25NW	KD-C25SRT
Imager	1/2.5-inch Back-Illuminated Exmor R CMOS Sensor		
Optical zoom	4K 20X, SRZ 4K 30X, HD 40X		
Angle	Pan-175°~+175°, Tilt+90°~-30°		
Speed	Servo Motor Control, Speed: Pan0.1°~300°/s, Tilt0.1°~300°/s		
Precision	Precision Repeatability Error < 0.01		
Slow mode	Support		
Effective pixels	8,930,000Pixels		
Min illumination	0.75 Lux		
SNR	55db		
Resolution	3840×2160		
IRIS	Auto/Manual		
Focus	Auto/Manual		
White balance	Auto/Manual		
Focal length	F=4.4mm~88mm, F2.0(wide)~F3.8(tele)		
Min distance	10mm~INF (wide), 1500mm~INF (tele) (default: 300mm)		
Singal	2160p29.97/25/23.98, 1080p59.94/50/23.98p, 1080i59.94/50, 720p59.94/50		
Preset bit	128		
Control protocol	VISCA RS-485, RJ45 (input/output), HDBaseT	VISCA RS-485, RJ45 (input/output), Support control, NDI HX wireless	VISCA RS-485, RJ45 (input/output), Support Control, SRT Wireless
Interface	BNC(×1), 1.0Vp-p 75Ω, SDI out×2, HDMI(4K)×1, HDBaseT(4K)×1	BNC(×1), 1.0Vp-p 75Ω, SDI out×2, NDI RJ45×1, NDI HX wireless Wi-Fi×1, USB×1, HDMI(4K) out×1, MIC IN×1	BNC(×1), 1.0Vp-p 75Ω, SDI out×2, SRT RJ45×1, SRT Wireless Wi-Fi×1, USB×1, HDMI(4K) out×1, MIC IN×1
Video encod	N/A	H.264 Baseline/Main/High Profile, 4:2:0, Max: 8mbps	
Audio encod	N/A	AAC LC, 32kbps, 64kbps, 96kbps, 128 Kbps	
REC	N/A	MP4/MOV, 1920×1080 60fps	
Card	N/A	Ultra TF(MicroSD)/FAT32, exFAT	
Live stream	N/A	NDI	SRT, RTMP
MIC	φ9.7×2 MIC (Array omnidirectional microphone, 32K sampling, I2S 48KHz, AEC, AGC, ANS)		
TALLY	360°TALLY		
Power supply	DC jack 12DC, DC10.8V-13.2V		



PTZ camera

[Link to the official website](#)

1. 1-inch Exmor R CMOS, broadcast quality 4K image;
2. 4K 12x optical zoom, SRZ 4K 18x; HD 24x;
3. Servo motor high-speed PTZ, pan/tilt speed 0.1°~300°/sec;
4. NDI wired, NDI wireless;
5. 20.4 million pixels, 3840×2160 resolution;
6. SDI, NDI, HDMI 4K video output;
7. Recording MP4/MOV, 1080p 60fps Ultra TF (MicroSD) FAT32, exFAT;
8. Live broadcast NDI HX, 360° TALLY lamp, dual φ9.7 microphone omni-directional array microphone;
9. Application: 4K video, studio, media live, multi-camera shooting;
10. Size: 160mm×155mm×230mm; Weight: about 1.8kg.



KD-C1000NW

[Link to the official website](#)



KD-C1000SRT

1. 1-inch Exmor R CMOS, broadcast quality 4K image;
2. 4K 12x optical zoom, SRZ 4K 18x, HD 24x;
3. Servo motor high-speed PTZ, pan/tilt speed 0.1°~300°/sec;
4. SRT wired, SRT wireless;
5. 20.4 million pixels, 3840×2160 resolution;
6. SDI, SRT, HDMI 4K video output;
7. Recording MP4/MOV, 1080p 60fps Ultra TF (MicroSD) FAT32, exFAT;
8. Live broadcast SRT, RTMP, 360°TALLY lamp, dual φ9.7 microphone omni-directional array microphone;
9. Application: 4K video, studio, media live, multi-camera shooting;
10. Size: 160mm×155mm×230mm; Weight: about 1.8kg.

[Link to the official website](#)

1. 1-inch Exmor R CMOS, broadcast quality 4K image;
2. 4K 12x optical zoom, SRZ 4K 18x; HD 24x;
3. Servo motor high-speed PTZ, pan/tilt speed 0.1°~300°/sec;
4. 4K HDBaseT remote lossless image transmission and control technology;
5. 20.4 million pixels, 3840×2160 resolution;
6. SDI, HDMI 4K, HDBaseT 4K video output;
7. Audio XLR x 2 input, 48V phantom power supply, embedded audio;
8. Built-in dual φ9.7 microphone omni-directional array microphone and 360° TALLY lamp;
9. Application: 4K video, studio, media live, multi-camera shooting;
10. Size: 160mm×155mm×230mm; Weight: about 1.8kg.



KD-C1000UH



KD-C1000

Technical parameter

Model	KD-C1000UH	KD-C1000NW	KD-C1000SRT
Imager	1-inch Back-Illuminated Exmor R CMOS Sensor		
Optical zoom	4K 12X, SRZ 4K 18X, HD 24X		
Angle	Pan-175°~+175°, Tilt+90°~-30°		
Speed	Servo Motor Control, Speed: Pan0.1°~300°/s, Tilt0.1°~300°/s		
Precision	Precision Repeatability Error < 0.01		
Slow mode	Support		
Effective pixels	20,400,000Pixels		
Min illumination	0.01 Lux		
SNR	55db		
Resolution	3840×2160		
IRIS	Auto/Manual		
Focus	Auto/Manual		
White balance	Auto/Manual		
Focal length	F=9.3mm~111.6mm, F2.8(wide)~F4.5(tele)		
Min distance	80mm~INF (wide), 1000mm~INF (tele)		
Singal	2160p29.97/25/23.98, 1080p59.94/50/23.98p, 1080i59.94/50, 720p59.94/50		
Preset bit	128		
Control protocol	VISCA RS-485, RJ45 (input /output), HDBaseT	VISCA RS-485, RJ45 (input /output), Support control, NDI HX wireless	VISCA RS-485, RJ45 (input/output), Support Control, SRT Wireless
Interface	BNC(×1), 1.0Vp-p 75Ω, SDI out×2, HDMI(4K)×1, HDBaseT(4K)×1	BNC(×1), 1.0Vp-p 75Ω, SDI out×2, NDI RJ45×1, NDI HX wireless Wi-Fi×1, USB×1, HDMI(4K) out×1, MIC IN×1	BNC(×1), 1.0Vp-p 75Ω, SDI out×2, SRT RJ45×1, SRT Wireless Wi-Fi×1, USB×1, HDMI(4K) out×1, MIC IN×1
Video encod	N/A	H.264 Baseline/Main/High Profile, 4:2:0, Max: 8mbps	
Audio encod	N/A	AAC LC, 32kbps, 64kbps, 96kbps, 128 Kbps	
REC	N/A	MP4/MOV, 1920×1080 60fps	
Card	N/A	Ultra TF(MicroSD)/FAT32, exFAT	
Live stream	N/A	NDI	SRT, RTMP
MIC	φ9.7×2 MIC (Array omnidirectional microphone, 32K sampling, I2S 48KHz, AEC, AGC, ANS)		
TALLY	360°TALLY		
Power supply	DC jack 12DC, DC10.8V-13.2V		



PTZ camera

[Link to the official website](#)

1. 1/1.8-inch STARVIS2 CMOS, broadcast quality 4K image;
2. 25x optical zoom;
3. Servo motor high-speed PTZ, pan/tilt speed 0.1°~300°/sec;
4. NDI 4K wired;
5. 8.4 million pixels, 3840×2160 resolution;
6. HDMI 4Kp60, NDI 4K, POE video output;
7. Recording MP4/MOV, 2160p 30fps Ultra TF (MicroSD) FAT32, exFAT;
8. Live broadcast NDI HX, 360° TALLY lamp, dual φ9.7 microphone omni-directional array microphone;
9. Application: 4K video, studio, media live, multi-camera shooting;
10. Size: 160mm×155mm×230mm; Weight: about 1.8kg.



KD-C95NW

[Link to the official website](#)



KD-C95SRT

1. 1/1.8-inch STARVIS2 CMOS, broadcast quality 4K image;
2. 25x optical zoom;
3. Servo motor high-speed PTZ, pan/tilt speed 0.1°~300°/sec;
4. SRT 4K wired;
5. 8.4 million pixels, 3840×2160 resolution;
6. HDMI 4Kp60, SRT 4K, POE video output;
7. Recording MP4/MOV, 2160p 30fps Ultra TF (MicroSD) FAT32, exFAT;
8. Live broadcast SRT, RTMP, 360°TALLY lamp, dual φ9.7 microphone omni-directional array microphone;
9. Application: 4K video, studio, media live, multi-camera shooting;
10. Size: 160mm×155mm×230mm; Weight: about 1.8kg.

[Link to the official website](#)

1. 1/1.8-inch STARVIS2 CMOS, broadcast quality 4K image;
2. 25x optical zoom;
3. Servo motor high-speed PTZ, pan/tilt speed 0.1°~300°/sec;
4. 4K HDBaseT remote lossless image transmission and control technology;
5. 8.4 million pixels, 3840×2160 resolution;
6. SDI, HDMI 4Kp60, HDBaseT 4K video output;
7. Audio XLR x 2 input, 48V phantom power supply, embedded audio;
8. Built-in dual φ9.7 microphone omni-directional array microphone and 360° Tally lamp;
9. Application: 4K video, studio, media live, multi-camera shooting;
10. Size: 160mm×155mm×230mm; Weight: about 1.8kg



KD-C95UH



KD-C95

Technical parameter

Model	KD-C95UH	KD-C95NW	KD-C95SRT
Imager	1/1.8-inch STARVIS2 CMOS Sensor		
Optical zoom	25X		
Angle	Pan-175°~+175°, Tilt+90°~-30°		
Speed	Servo Motor Control, Speed: Pan0.1°~300°/s, Tilt0.1°~300°/s		
Precision	Precision Repeatability Error < 0.01		
Slow mode	Support		
Effective pixels	8,400,000Pixels		
Min illumination	100~100000 Lux		
SNR	55db		
Resolution	3840×2160		
IRIS	Auto/Manual		
Focus	Auto/Manual		
White balance	Auto/Manual		
Focal length	F=6.5mm~162.5mm,F1.6(wide)~F4.8(tele)		
Min distance	100mm~INF (wide), 1200mm~INF (tele)		
Singal	2160p60/50/29.97/25/23.98, 1080p59.94/50/23.98p, 1080i59.94/50, 720p59.94/50		
Preset bit	128		
Control protocol	VISCA RS-232/485, RJ45 (input/output), HDBaseT	VISCA RS-232/485, RJ45 (input/output), Support control, NDI, POE	VISCA RS-232/485, RJ45 (input/output), Support Control, SRT, POE
Interface	BNC(×1), 1.0Vp-p 75Ω, SDI out×2, HDMI(4K)×1, HDBaseT(4K)×1	BNC(×1), 1.0Vp-p 75Ω, SDI out×2, NDI RJ45×1, NDI 4K, USB×1, HDMI(4K) out×1, MIC IN×1, TF×1	BNC(×1), 1.0Vp-p 75Ω, SDI out×2, SRT RJ45×1, SRT 4K, USB×1, HDMI(4K) out×1, MIC IN×1, TF×1
Video encod	N/A	H.264 Baseline/Main/High Profile, 4:2:0, Max: 8mbps	
Audio encod	N/A	AAC LC, 32kbps, 64kbps, 96kbps, 128 Kbps	
REC	N/A	MP4/MOV/TS, 2160p 60fps	
Card	N/A	Ultra TF(MicroSD)/FAT32, exFAT	
Live stream	N/A	NDI	SRT, RTMP
MIC	φ9.7×2 MIC (Array omnidirectional microphone, 32K sampling, I2S 48KHz, AEC, AGC, ANS)		
TALLY	360°TALLY		
Power supply	DC jack 12DC, DC10.8V-13.2V		



Broadcast PTZ

1. Rotation range: horizontal: 355 °; Pitch:+90 °~-90 °; support software limit;
2. Rotation speed: horizontal: 0.01~60 °/S; Pitch: 0.01~60 °/S; full speed control of PTZ and lens;
3. Positioning accuracy: full closed-loop absolute positioning, 0.01 ° ± 10%;
4. Adjustable damping: support (factory preset), customize, slow stop and slow start, quick response;
5. Preset position: 256;
6. Preset trajectory: 9 groups, 256 commands per group (pan, tilt, lens);
7. Control protocol: VISCA, support protocol customization;
8. Video signal output: SDI×1, HDMI×1;
9. Online upgrade: support;
10. Remote switch: support;
11. Camera power supply: support;
12. Control mode: wired network cable RS232/RS485 and wireless 2.4G/433M at the same time;
13. Control distance: wired 1.2km, wireless 200m/1000m;
14. Power Supply: 24~36V; Power: 180W (excluding camera);
15. Working temperature : -10 ~ 45 °C;
16. Tally: support;
17. Load: 10kg;
18. Size: 158mm×158mm×204mm; Weight: 4.5kg.

[Link to the official website](#)



KD-A800PTZ



Broadcast console

1. Broadcast grade high-precision three-axis control joystick;
2. Broadcast grade imported button, blue backlight;
3. Control protocol: VISCA protooco;
4. Camera settings: white balance, auto white balance, one-key white balance, manual focus, manual shutter, manual aperture and menu;
5. 9 preset positions per channel, 10 channels;
6. Working temperature: -10°C—70°C;
7. Relative humidity: 30%—90%;
8. Power adapter: AC100-240V to 12VDC /2000mA;
9. Power: 8W;
10. Interface: RS485: connect camera, equivalent to RS422 sending port, 2000M distance, RS232: connect camera, camera is used for RS232 communication, USB-D: USB2.0 is used to connect computer, server, NVR, etc.

[Link to the official website](#)



[Link to the official website](#)



1. Broadcast grade high-precision three-axis control joystick;
2. Broadcast grade imported button, blue backlight;
3. Control protocol: VISCA protooco;
4. Camera settings: white balance, auto white balance, one-key white balance, manual focus, manual shutter, manual aperture and menu;
5. 9 preset positions per channel, 10 channels;
6. Working temperature: -10°C—70°C;
7. Relative humidity: 30%—90%;
8. Power adapter: AC100-240V to 12VDC /2000mA;
9. Power: 8W;
10. Interface: RS485: connect camera, equivalent to RS422 sending port, 2000M distance, RS232: connect camera, camera is used for RS232 communication, USB-D: USB2.0 is used to connect computer, server, NVR, etc.



Follow focus

1. Standard mode: follow focus to automatically find the starting and ending points of the zoom, with preset point function;
2. FREE RUN mode: follow focus to rotate infinitely under the control of the controller. The maximum speed of the gear is 60rpm;
3. Maximum operating speed: 60 rpm;
4. Maximum torque: 0.35 Nm;
5. Working temperature : -20 ~ 55 °C;
6. Working current: 80 mA; Stall current: 1.5A;
7. Working voltage : 12 V
8. Noise: <25dB;
9. Gear module: 0.6, number of gear teeth: 58;
10. Size: 93mm × 62mm × 32 mm; Weight: 170g.

[Link to the official website](#)



[Link to the official website](#)



1. Standard mode: follow focus to automatically find the starting and ending points of the zoom, with preset point function;
2. FREE RUN mode: follow focus to rotate infinitely under the control of the controller. The maximum speed of the gear is 60rpm;
3. Maximum operating speed: 60 rpm;
4. Maximum torque: 0.35 Nm;
5. Working temperature : -20 ~ 55 °C;
6. Working current: 80 mA; Stall current: 1.5A;
7. Working voltage : 12 V
8. Noise: <25dB;
9. Gear module: 0.8, number of gear teeth: 42;
10. Size: 93mm × 62mm × 32 mm; Weight: 170g.



KIND[®]

WE ARE A PROFESSIONAL VIDEO
EQUIPMENT MANUFACTURER



SRT
SECURE
RELIABLE
TRANSPORT

4K
ULTRAHD

NDI

HDMI[®]
HIGH-DEFINITION MULTIMEDIA INTERFACE

Beijing KIND Network Technology Co.,Ltd.
KINDLIVECAST.COM